



# TOTVS

JCP and other SDOs – case: ITU

TQTVD



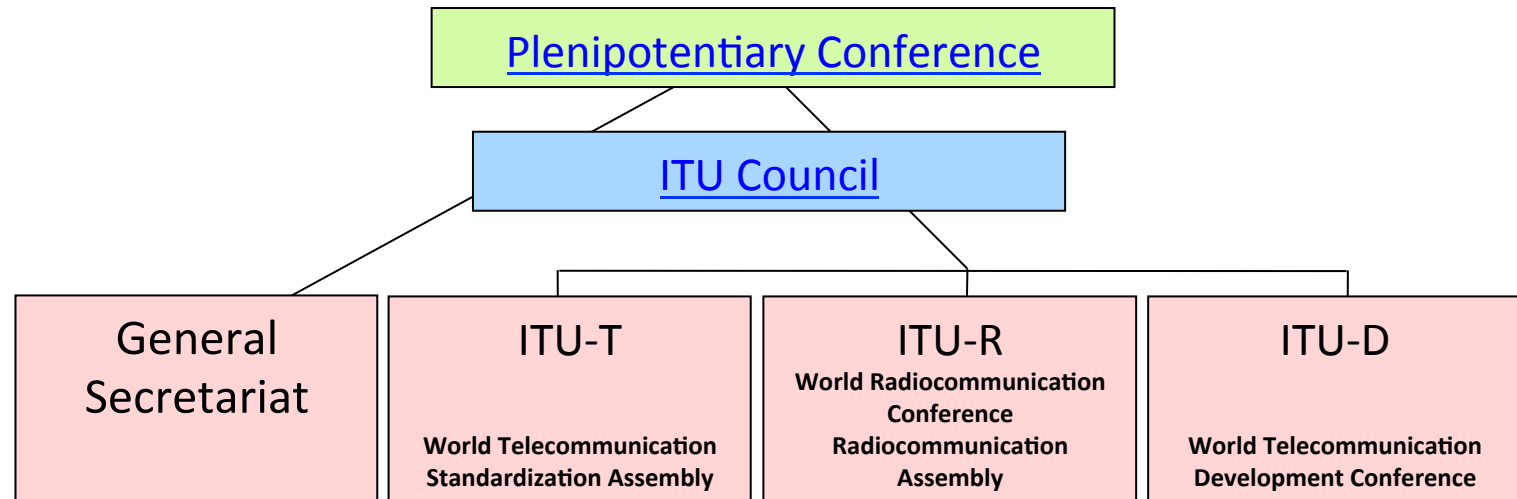
TOTVS

ITU – International Telecommunications Union



# What is ITU?



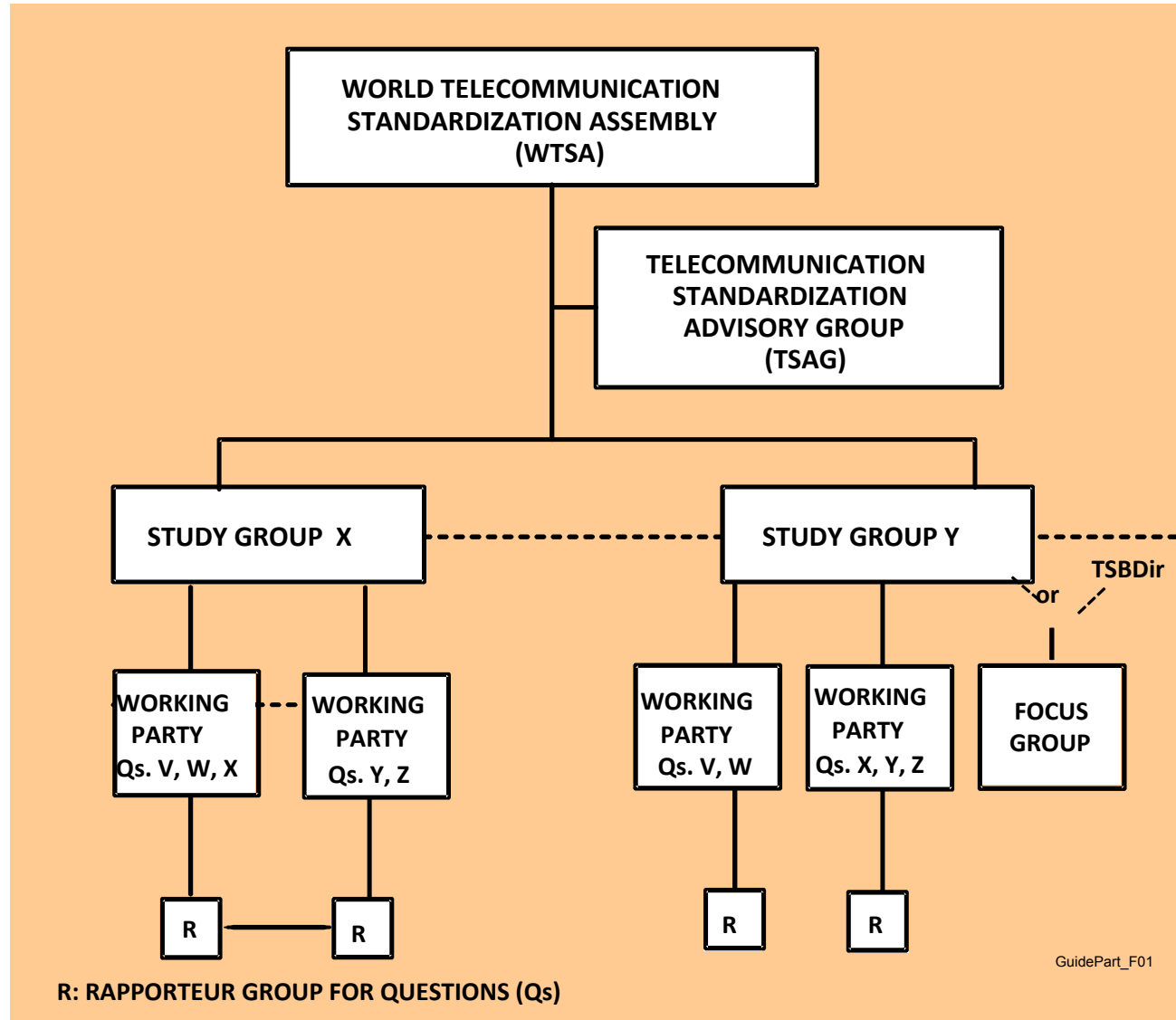


- **ITU-T**: Telecommunication standardization on a world-wide basis on technical, operating and tariff Questions  
*(The Secretariat of ITU-T (TSB) provides services to ITU-T Participants)*
- **ITU-R**: Radio communications and wireless
- **ITU-D**: Use and deployment of telecom networks and services in developing and least developed countries
- **General Secretariat**: Coordinates the Union's activities and the overall management of the Union

- Work (mostly) done in Study Groups (10 of them)
- ITU-T Product: Recommendations (= “standards”)
  - Example: H.264 (Video), G.984 (GPON), Y.2012 (NGN)
- Unique partnership of private sector (Sector Members) & government (Member States)
  - Today, most of the work is done by private sector
    - Strong participation from Asia, esp. China and Japan
  - Remaining work related to regulatory impact
- Truly global
- Consensus decisions
- Very flexible
- Fast procedures, transparent procedures
- Brand name
- IPR Policy

WTSA  
TSAG  
Study  
Groups

Focus  
Groups



- Create forum-like entities as an “arms-length” organization under an ITU-T Study Group or TSAG
- Work on a well-defined topic, scheduled for completion at a specific time
- Goal: Encourage participation of non-members / members of other organizations (forums)
- Focus Group has lots of freedom to establish its own rules
  - Can keep own brand name and at the same time benefit from ITU’s branding
  - Non-ITU members can participate
- Recent examples:
  - ICTs and Climate change (ICT & CC) Focus Group
  - From/In/To Cars communication II (CarCom) Focus Group
  - IPTV Focus Group (terminated 2008-01)
- More info: <http://itu.int/ITU-T/focusgroups>

## Common Patent Policy

- Option
- 1) Free license to everybody
  - 2) Paid for license granted on reasonable terms and conditions on a world-wide non-discriminatory basis (RAND)
  - 3) Unwillingness to grant a license

- [Guidelines for Implementation of the Common Patent Policy for ITU-T/ITU-R/ISO/IEC](http://www.itu.int/en/ITU-T/ipr/Pages/policy.aspx)  
<http://www.itu.int/en/ITU-T/ipr/Pages/policy.aspx>
- [Patent Statement and Licensing Declaration database](http://www.itu.int/en/ITU-T/ipr/Pages/default.aspx)  
<http://www.itu.int/en/ITU-T/ipr/Pages/default.aspx>



TOTVS

## ITU and other SDOs



# Collaboration with other Organizations



- ITU's Constitution/Convention asks that ITU-T cooperate "with other world and regional intergovernmental organizations, and those non-governmental organizations concerned with telecommunications".
- ITU-T has a wealth of instruments in place to collaborate with others.

## ITU-T Rec. A.4: "Communication process between ITU-T and Forums and Consortia"

- Goal: to facilitate documentation exchange
- Criteria: pretty straightforward and common sense
  - Evident ones: subject area should be of relevance to the work done in ITU-T.
  - Documents submitted to ITU-T should not contain proprietary information (no restriction for distribution)
  - Forum membership should not preclude ITU MS or SM.
  - Patent policy: must be consistent with ITU-T patent policy
- A formal communication process can be initiated either by the forum or by ITU-T (e.g. Study Group or Director of TSB)
- Can be initiated at any time

## **ITU-T Rec. A.6: "Cooperation and exchange of information between ITU-T and national and regional standards development organizations"**

- Similar in spirit to A.4
- Global Standards Collaboration (GSC)
  - Annual meetings of nine leading national and regional standards organizations and ITU

## Reference to documents of other organizations in ITU-T Recommendations

- Normative reference (Rec. A.5)
  - The whole, or parts of a referenced document considered an integral part of the Recommendation
  - The source of the normative reference should be Rec. A.4 or Rec. A.6 Qualified Organizations
  - Normative referencing is usually limited to approved documents of the referenced organization.
  - Need to submit justification for the specific reference using a Format given in Appendix I to Rec. A.5

## JCP - ITU Recognition

For ITU-T JCP is already in a state of Evaluation, at least on the scope of SG9.

See: <http://www.itu.int/net/ITU-T/lists/qualified.aspx>

In the case of JCP it should go into A.4 and (ideally) A.5 process.

A.4 is for **Communication process between ITU-T and Forums and Consortia**

A.5 is for **Generic procedures for including references to documents of other organizations in ITU-T Recommendations**

A.6 is for regional and national SDOs and does not apply to JCP.

## JCP - ITU Recognition

See: <http://www.itu.int/net/ITU-T/lists/qualified.aspx>

Examples of SDOs recognized under A.4 only:

**3G Association, ETIS, GSM Association, IP Shpere Forum, IPV6 Forum, MMTA, MSF, Open IPTV Forum, SDL Forum, UPA, etc.**

Examples of SDOs recognized under A.4 and A.5:

**ATSC, AVS, Broadband Forum, DSL Forum, Home Gateway Initiative, IMTC, Japan Cable Labs, MEF, OASIS, Open Mobile Alliance (OMA), UNICODE, W3C, etc.**

## ITU Qualifying Criteria

Most important in the table below (from Rec. A.4) is item 5 but items 1 to 8 also apply as general guidelines to be answered.

| Forum/consortium attributes  | Desired characteristics  |
|--|--|
| <b>1) Objectives/relationship of work to ITU-T work</b>  | Objectives should refer to use of International Standards/Recommendations, or to the provision of input into international standards organizations, especially ITU-T.  |
| <b>2) Organization:</b><br>– legal status;<br>– geographic scope;<br>– secretariat;<br>– nominated representative. | – should indicate in which country/countries it has legal status;<br>– should be global (i.e. should involve more than one region of the world);<br>– permanent secretariat should exist;<br>– should be willing to nominate a representative. |

## ITU Qualifying Criteria

|  |  |
|--|--|
| <b>3) Membership (openness)</b>  | <ul style="list-style-type: none"> <li>– forums/consortia membership criteria should not preclude any party with material interest, especially ITU Member States and Sector Members;</li> </ul>  |
|  | <ul style="list-style-type: none"> <li>– membership should comprise a significant representation of telecommunications interests.</li> </ul>   |
| <b>4) Technical subject areas</b>  | <ul style="list-style-type: none"> <li>- Should be relevant to a particular study group(s) or ITU-T as a whole.</li> </ul>   |
| <b>5) IPR Policy:</b> <ul style="list-style-type: none"> <li>– patent;</li> <li>– software copyright;</li> <li>– copyright;</li> <li>– trademark.</li> </ul> | <ul style="list-style-type: none"> <li>– should be consistent with ITU-T Patent policy;</li> <li>– should be consistent with ITU-T Software copyright Policy;</li> <li>– ITU and ITU Member States and Sector Members should have right to copy for standardization related purposes (see also Rec. ITU-T A.1 with regard to copying and distribution).</li> </ul> |



## ITU Qualifying Criteria

|  |   |
|--|---|
| <b>6) Working methods/processes</b>    | <ul style="list-style-type: none"> <li>– should be well-documented;</li> <li>– should be open and fair;</li> <li>– should support competition;</li> <li>– should explicitly consider anti-trust issues.</li> </ul>  |
| <b>7) Outputs</b>                      | <ul style="list-style-type: none"> <li>– outputs available to ITU-T should be identified;</li> <li>– process for ITU-T to obtain outputs should be identified.</li> </ul>   |
| <b>8) Documents submitted to ITU-T</b> | <ul style="list-style-type: none"> <li>– should contain no proprietary information (no distribution restriction);</li> <li>– should indicate source within the forum/ consortium (e.g. committee, subcommittee, etc.);</li> <li>– should indicate degree of stability of the document (e.g. preliminary, mature, stable, proposed date of adoption, etc.);</li> <li>– should indicate degree of approval of document (i.e. per cent of total forum membership involved and per cent of total forum membership that approved the document).</li> </ul> |



TOTVS

JCP and other SDOs – case: ITU

Let's share

**TQTV D – TOTVS Digital TV Unit**

[Aguinaldo.boquimpani@totvs.com.br](mailto:Aguinaldo.boquimpani@totvs.com.br)

[www.totvs.com](http://www.totvs.com)

[www.tqtv d.com](http://www.tqtv d.com)